

# PRODUCT INFORMATION PACKET

Modal No: 184TBDW7026  
Catalog No: I114A  
5,1800,DP,184T,1/60/208-230  
Air Compressor



Regal and Marathon are trademarks of Regal Beloit Corporation or one of its affiliated companies.  
©2017 Regal Beloit Corporation, All Rights Reserved. MC017097E

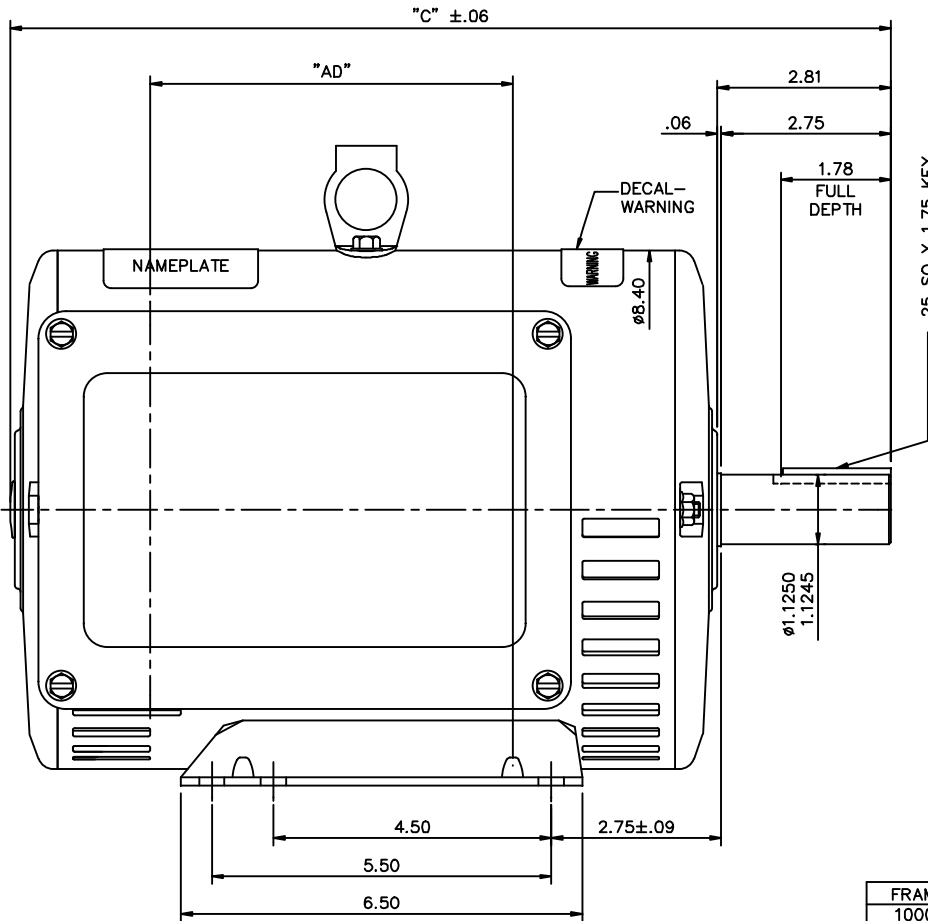


## Nameplate Specifications

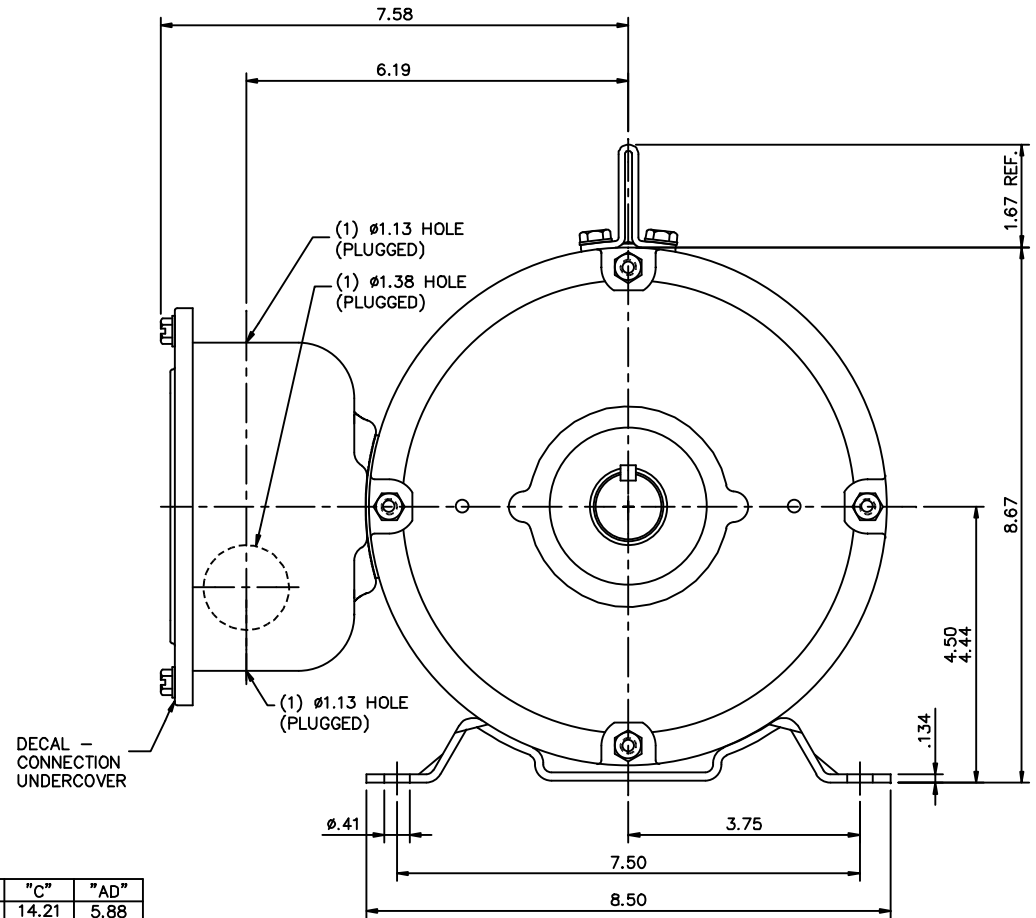
Output HP	<b>5 Hp</b>	Output KW	<b>3.7 kW</b>
Frequency	<b>60 Hz</b>	Voltage	<b>208-230 V</b>
Current	<b>23-21 A</b>	Speed	<b>1740 rpm</b>
Service Factor	<b>1.15</b>	Phases	<b>1</b>
Efficiency	<b>83 %</b>	Duty	<b>CONTINUOUS</b>
Insulation Class	<b>F</b>	Design Code	<b>NO DESIGN CODE</b>
KVA Code	<b>H</b>	Frame	<b>184T</b>
Enclosure	<b>DP</b>	Overload Protector	<b>NOT</b>
Ambient Temperature	<b>40 °C</b>	Drive End Bearing Size	<b>6206</b>
Opp Drive End Bearing Size	<b>6205</b>	UL	<b>Recognized</b>
CSA	<b>Y</b>	CE	<b>Y</b>
IP Code	<b>22</b>		

## Technical Specifications

Electrical Type	<b>CAP START CAP RUN</b>	Starting Method	<b>ACROSS THE LINE</b>
Poles	<b>4</b>	Rotation	<b>SELECTIVE CCW</b>
Mounting	<b>RIGID</b>	Motor Orientation	<b>HORIZONTAL</b>
Drive End Bearing	<b>BALL</b>	Opp Drive End Bearing	<b>BALL</b>
Frame Material	<b>ROLLED STEEL</b>	Shaft Type	<b>T</b>
Overall Length	<b>14.71 in</b>	Frame Length	<b>10.5 in</b>
Shaft Diameter	<b>1.13 in</b>	Shaft Extension	<b>2.81 in</b>
Assembly/Box Mounting	<b>F1 ONLY</b>		



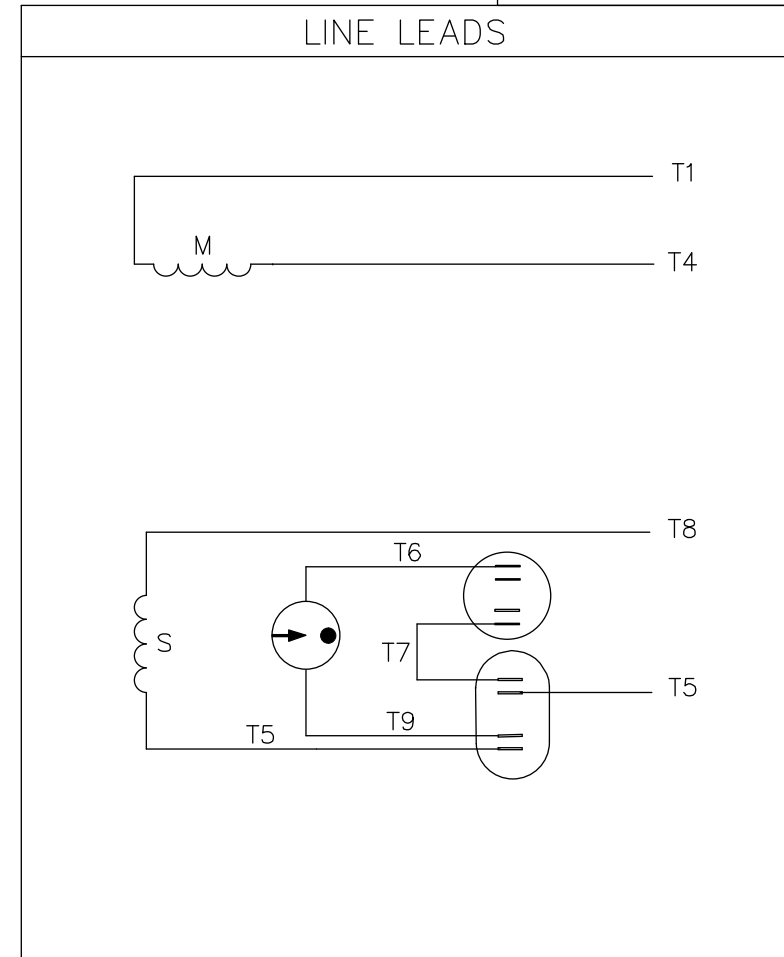
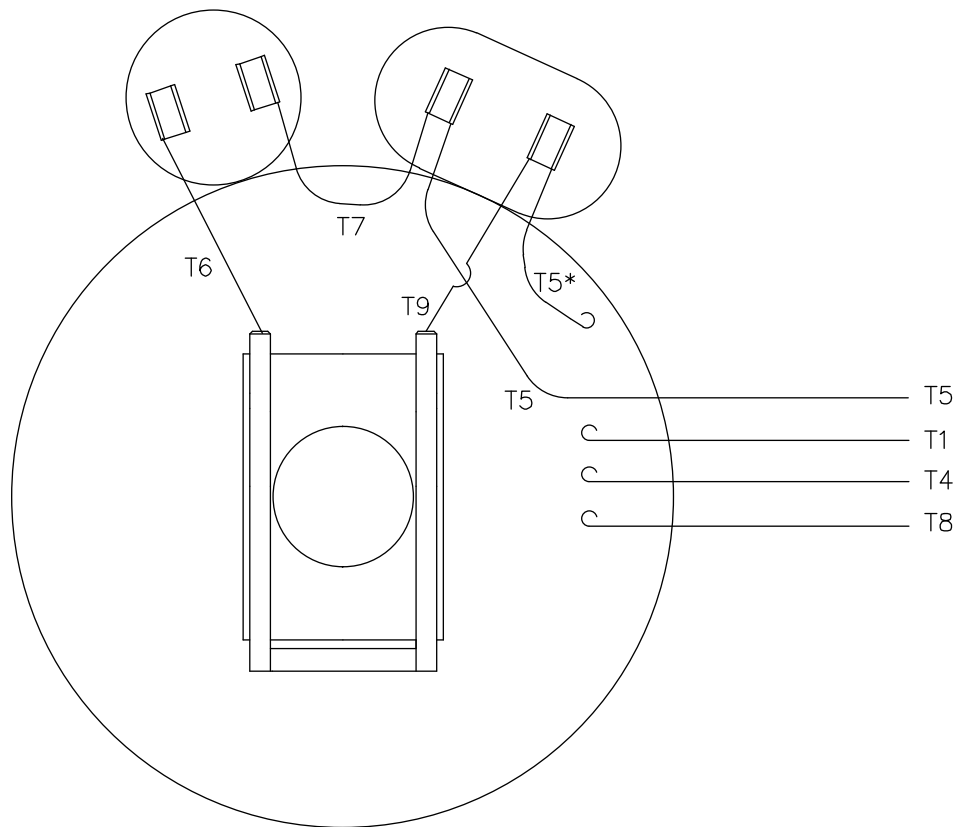
FRAME	"C"	"AD"
1000	14.21	5.88
1050	14.71	6.38
1100	15.21	6.88
1150	15.71	7.38
1200	16.21	7.88
1250	16.71	8.38



GASKETS THROUGHOUT

NO.		REVISION	BY & DATE	CHK	ANG	±1/2"	FINISH	TOLERANCES UNLESS SPECIFIED		MARATHON ELECTRIC	DRAWN YS 03/17/08		
								DEC.	INCHES		CHK	APPD	
								.X	±.1	TITLE	OUTLINE- 180T FRAME	SCALE	1=2
								.XX	±.03	REF	DRIP PROOF- RIGID	REF	
								.XXX	±.005	MAT'L		FMF	182CDW8016
								.XXXX	±.0005			PREV	
THIS DRAWING IN DESIGN AND DETAIL IS OUR PROPERTY AND MUST NOT BE USED EXCEPT IN CONNECTION WITH OUR WORK ALL RIGHTS OF DESIGN AND INVENTION ARE RESERVED THIS IS AN ELECTRONICALLY GENERATED DOCUMENT - DO NOT SCALE THIS PRINT							RFP	CAD FILE	035655	SIZE	DRAWING NO.	B	035655
							DIST						

VIEW FROM OUTSIDE OF MOTOR AT SWITCH END.



ROTATION FACING LEAD END	L1	L2
C.C.W.	T1, T8	T4, T5
C.W.	T1, T5	T4, T8

\* THIS LEAD MAY BE WHITE

				TOLERANCES UNLESS SPECIFIED			DRAWN RDW 6/5/03		
				DEC.	INCHES		CHK		
				.X	±.1		APPD		
				.XX	±.01		SCALE 1=1		
				.XXX	±.005		REF 005018		
				.XXXX	±.0005	FMF 139047			
NO.	REVISION	BY & DATE	CHK	ANG	±1/2"	FINISH	PREV		
						TITLE EXTERNAL WIRING DIAGRAM TYPE "K" W/O PROTECTOR MAT'L. DECAL - 004018 FINISH 4 of 5		REF 005018 FMF 139047 PREV	

CERTIFICATION DATA SHEET

Model#: 184TBDW7026 AA WINDING#: K8450 DR 2  
 CONN. DIAGRAM: 005018.01ME ASSEMBLY: F1 ONLY  
 OUTLINE: 035655-1050

TYPICAL MOTOR PERFORMANCE DATA

HP	KW	SYNC. RPM	F.L. RPM	FRAME	ENCLOSURE	KVA CODE	DESIGN
5	3.7	1800	1740	184T	DP	H	NO DESIGN CODE

PH	Hz	VOLTS	FL AMPS	START TYPE	DUTY	INSL	S.F	AMB°C	ELEVATION
1	60	208-230	23-21	ACROSS THE LINE	CONTINUOUS	F4	1.15	40	3300

FULL LOAD EFF: 83	3/4 LOAD EFF: 81.9	1/2 LOAD EFF: 77.2	GTD. EFF	ELEC. TYPE	NO LOAD AMPS
FULL LOAD PF: 94	3/4 LOAD PF: 93.5	1/2 LOAD PF: 89.6	0	CAP START CAP RUN	5.9

F.L. TORQUE	LOCKED ROTOR AMPS	L.R. TORQUE	B.D. TORQUE	F.L. RISE°C
15 LB-FT	138	41.1 LB-FT 242	32.5 LB-FT 191	-

SOUND PRESSURE @ 3 FT.	SOUND POWER	ROTOR WK^2	MAX. WK^2	SAFE STALL TIME	STARTS /HOUR	APPROX. MOTOR WGT
62 dBA	72 dBA	0.46 LB-FT^2	0.5 LB-FT^2	10 SEC.	-	0 LBS.

\*\*\* SUPPLEMENTAL INFORMATION \*\*\*

DE BRACKET TYPE	ODE BRACKET TYPE	MOUNT TYPE	ORIENTATION	SEVERE DUTY	HAZARDOUS LOCATION	DRIP COVER	SCREENS	PAINT
STANDARD	STANDARD	RIGID	HORIZONTAL	FALSE	NONE	FALSE	NONE	BLUE (ENAMEL)

BEARINGS		GREASE	SHAFT TYPE	SPECIAL DE	SPECIAL ODE	SHAFT MATERIAL	FRAME MATERIAL
DE	OPE						
BALL	BALL	POLYREX EM	T	NONE	NONE	AISI 1045 (C-240)	ROLLED STEEL
6206	6205						

THERMO-PROTECTORS				THERMISTORS	CONTROL	SPACE /n HEATERS
THERMOSTATS	PROTECTORS	WDG RTDs	BRG RTDs			
NONE	NOT	NONE	NONE	NONE	FALSE	NONE VOLTS

If Inverter equals NONE, contact factory for further information

\*  
N  
O  
T  
E  
S  
\*

INVERTER TORQUE: NONE	INV. HP SPEED RANGE: NONE
ENCODER: NONE	NONE NONE
NONE NONE PPR	
BRAKE: NONE NONE	NONE P/N NONE
NONE NONE	NONE NONE
NONE FT-LB	NONE V NONE Hz